

2019 Bogies -n- Birdies

Check-in at Idlewild starts at 7:30.
 Players mtg at 9:00.
 Shotgun start at 9:30.
 Check-in and players mtg at shelter by #3.
 ALL cards turned in at Idlewild.
 One hour from last card at Idlewild to START at Boone Woods.
 Board will be ready at Boone Woods (shelter by 18)
 20 mins prior to START.
 Playoffs for 1st place ties.

Current	Old	Dist (par)			
1	1	640 ft (4)	13	7	259 ft (3)
2	2	370 ft (4)	14	8	368 ft (4)
3	A	420 ft (3)	15	9	200 ft (3)
4	B	315 ft (3)	16	10	647 ft (4)
5	C	299 ft (3)	17	11	500 ft (4)
6	D	285 ft (3)	18	12	214 ft (3)
7	E	320 ft (3)	19	13	237 ft (3)
8	3	390 ft (4)	20	14	195 ft (3)
9	4	350 ft (3)	21	15	1001 ft (5)
10	F	330 ft (3)	22	16	339 ft (3)
11	5	510 ft (5)	23	17	215 ft (3)
12	6	587 ft (5)	24	18	651 ft (5)
			Totals:		9642 ft / 86

Idlewild Course setup

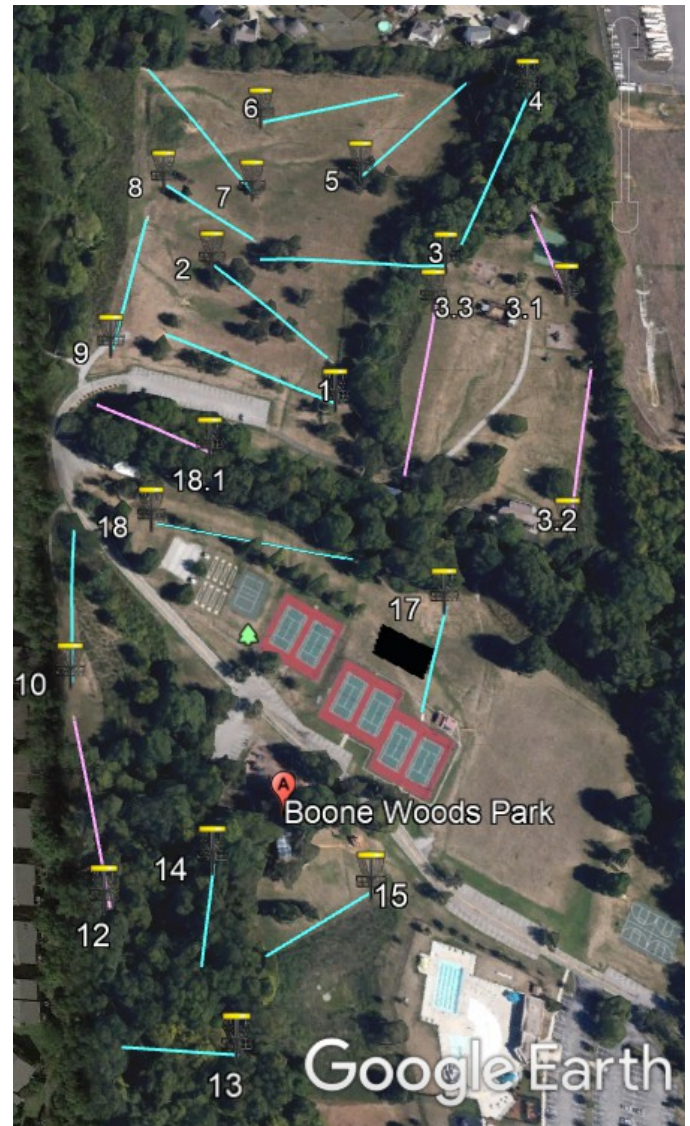
Everyone will play 24 Short .

- 1.
2. Short. OB surrounded by water.
→ Reminder to cross bridge to get to 3.
3. OB surrounded by water. Lake only. OB o/o road
4. Mando/Dropzone to left of tree. OB o/o road.
5. Short. OB surrounded by water. OB on road.
6. Mando/Dropzone to right of tree. OB surrounded by water. OB o/o road. DZ for all OB tee shots.
7. Short. OB surrounded by water. OB o/o walkway.
8. Short. Mando/Retee to left of tree. OB surrounded by water.
9. Walkway NOT OB.
10. Walkway NOT OB.
11. OB surrounded by water.
12. Mando/Dropzone to right of tree.
- 13.
- 14.
- 15.
- 16.
17. OB surrounded by water.
- 18.
19. Short.
20. Short.
21. OB surrounded by water.
22. Short. Mando/Dropzone to left of tree. OB surrounded by water.
- 23.
24. Double Mando. OB o/o fence.



Boone Woods Course setup

1. OB o/o fence. OB o/o road.
- 2.
3. OB in playground area. Creek is casual. Not OB.
 - 3.1 OB completely surrounded by weeds. Dropzone.
 - 3.2 OB completely surrounded by weeds. Dropzone.
 - 3.3 OB completely surrounded by weeds. Dropzone. OB o/o gravel path.
4. OB o/o fence. Creek is casual. Not OB.
- 5.
6. OB o/o fence. OB on/in residential property.
- 7.
- 8.
9. OB o/o fence. **OB surrounded by water in creek.**
10. OB o/o fence. OB on/in residential property.
- 11/12. OB o/o fence. OB on/in residential property.
- 13.
- 14.
15. OB o/o fence. OB o/o road.
- 17.
18. OB o/o fence(s). OB on volleyball court. OB o/o line extending from volleyball court fence to lawn bowling area thru backstop of horseshoe pits. Back stops are OB. OB on/in gravel surrounding lawn bowling lanes and lawn bowling lanes. **OB surrounded by water in creek.**
 - 18.1 OB o/of fence(s). OB on any pavement. **OB surrounded by water in creek.** Dropzone.



Hole #	Dist (par)
1	318 ft (3)
2	251 ft (3)
3	345 ft (3)
4	324 ft (3)
5	316 ft (3)
6	300 ft (3)
7	334 ft (3)
8	186 ft (3)
9	288 ft (3)
10	272 ft (3)
11	194 ft (3)
12	146 ft (3)
13	185 ft (3)
14	171 ft (3)
15	216 ft (3)
16	252 ft (3)
17	232 ft (3)
18	335 ft (3)
Totals:	4665 ft / 54

